

令和5年 群馬県 新設住宅着工戸数

(年次)

< 目 次 >

用語の定義

- (第1表) 新設住宅着工状況 (今年)
- (第2表) 新設住宅着工状況 (今年 全国との比較)
- (第3表) 新設住宅着工状況 (前年との比較)
- (第4表) 新設住宅着工推移 (利用関係別、建て方別)
- (第5表) 1戸あたりの床面積の推移
- (第6表) 地域別新設住宅着工状況 (建て方別)
- (第7表) 地域別新設住宅着工状況 (利用関係別)

新設住宅着工状況グラフ

- ① 新設住宅着工戸数の推移 (群馬県)
- ② 新設住宅着工戸数の推移 (利用関係別・群馬県)
- ③ 新設住宅着工戸数の推移 (建て方別・群馬県)
- ④ 令和5年新設住宅着工戸数の割合 (利用関係別)
- ⑤ 戸当たり床面積の推移 (利用関係別・全国)
- ⑥ 戸当たり床面積の推移 (利用関係別・群馬県)

<用語の定義>

1. 利 用 関 係

- 持 家 … 建築主が自分で居住する目的で建築するもの。
貸 家 … 建築主が賃貸する目的で建築するもの。
給 与 住 宅 … 会社、官公署、学校等がその社員、職員、教員等を居住させる目的
で建築するもの。
分 譲 住 宅 … 建て売り又は分譲の目的で建築するもの。

2. 建 て 方

- 一 戸 建 … 1つの建物が1住宅であるもの。
長 屋 建 … 2つ以上の住宅を1棟に建て連ねたもので、各住宅が壁を共通に
し、それぞれ別々に外部への出入口を有しているもの。「テラス・
ハウス」と呼ばれる住宅もここに含まれる。
共 同 住 宅 … 1つの建築物（1棟）内に2戸以上の住宅があつて、広間、廊下若
しくは階段等の全部又は一部を共用するもの。

3. 構 造

- 木 造 … 主要構造部（建築基準法第2条第5号の定義による。以下同じ）が
木造のもの（木骨モルタル塗及び土蔵造を含む）。
鉄骨鉄筋コンクリート造 … 主要構造部が鉄骨と鉄筋コンクリートを一体化した構造。
鉄 筋 コ ン ク リ ー ト 造 … 主要構造部が型わくの中に鉄筋を組みコンクリートを打ち込んで一
体化した構造。
鉄 骨 造 … 主要な骨組が鉄骨造またはその他の金属で造られたもの（鉄骨をリ
プラスしてあるもの軽量鉄骨造も本分類に含む）。
そ の 他 … 石造、れん瓦造、無筋コンクリート造、コンクリートブロック造、
その他、他の分類に該当しない構造のもの。

4. 建 築 工 法

- 在 来 工 法 … プレハブ工法、枠組壁工法以外の工法をいう。
プ レ ハ ブ 工 法 … 住宅の主要構造部の壁、柱、床、はり、屋根又は階段等の部材を機
械的方法で大量に工場生産し、現場においてこれらの部材により組
立建築を行うことをいう。
枠 組 壁 工 法 … ツーバイフォー工法住宅をいう。

令和5年 群馬県 新設住宅着工戸数（年次）

（第1表）新設住宅着工状況（今年）

（単位：戸、㎡）

| 月 | 新設住宅総計 | | | | 利用関係別 | | | | | | | | 建て方別 | | | | 持家率 | |
|----|--------|--------|---------|--------|-------|---------|-------|---------|------|-------|-------|---------|---------|---------|-------|--------|-------|-------|
| | 戸数 | | 床面積 | | 持家 | | 貸家 | | 給与住宅 | | 分譲住宅 | | 一戸建・長屋建 | | 共同建 | | 持家系 | 借家系 |
| | 戸 | % | ㎡ | % | 戸数 | 床面積 | 戸数 | 床面積 | 戸数 | 床面積 | 戸数 | 床面積 | 戸数 | 床面積 | 戸数 | 床面積 | 持家+分譲 | 貸家+給与 |
| 1 | 826 | 20.4% | 78,243 | 9.9% | 386 | 44,013 | 240 | 12,506 | 2 | 274 | 198 | 21,450 | 697 | 72,001 | 129 | 6,242 | 70.7% | 29.3% |
| 2 | 687 | 4.4% | 65,737 | ▲5.0% | 375 | 42,091 | 181 | 9,590 | 1 | 83 | 130 | 13,973 | 609 | 62,049 | 78 | 3,688 | 73.5% | 26.5% |
| 3 | 965 | 2.8% | 90,681 | ▲8.0% | 405 | 45,746 | 198 | 9,032 | 1 | 194 | 361 | 35,709 | 709 | 72,477 | 256 | 18,204 | 79.4% | 20.6% |
| 4 | 800 | ▲30.1% | 82,877 | ▲24.3% | 432 | 49,031 | 118 | 6,256 | 1 | 78 | 249 | 27,512 | 774 | 81,459 | 26 | 1,418 | 85.1% | 14.9% |
| 5 | 919 | 1.1% | 89,145 | 0.7% | 466 | 53,132 | 219 | 10,818 | 4 | 489 | 230 | 24,706 | 799 | 83,913 | 120 | 5,232 | 75.7% | 24.3% |
| 6 | 872 | 2.5% | 85,814 | 2.3% | 437 | 49,196 | 168 | 8,640 | 1 | 198 | 266 | 27,780 | 794 | 80,899 | 78 | 4,915 | 80.6% | 19.4% |
| 7 | 877 | ▲17.9% | 85,503 | ▲19.5% | 474 | 53,732 | 227 | 12,723 | 4 | 552 | 172 | 18,496 | 824 | 82,495 | 53 | 3,008 | 73.7% | 26.3% |
| 8 | 947 | ▲8.9% | 89,772 | ▲9.1% | 483 | 54,878 | 260 | 13,127 | 1 | 179 | 203 | 21,588 | 866 | 86,167 | 81 | 3,605 | 72.4% | 27.6% |
| 9 | 842 | ▲3.9% | 82,676 | ▲7.1% | 415 | 47,013 | 190 | 11,552 | 4 | 395 | 233 | 23,716 | 743 | 75,953 | 99 | 6,723 | 77.0% | 23.0% |
| 10 | 887 | ▲6.6% | 82,874 | ▲10.4% | 400 | 45,748 | 240 | 12,923 | 6 | 591 | 241 | 23,612 | 763 | 75,613 | 124 | 7,261 | 72.3% | 27.7% |
| 11 | 755 | ▲31.6% | 73,152 | ▲29.3% | 389 | 44,156 | 145 | 6,809 | 16 | 322 | 205 | 21,865 | 659 | 69,443 | 96 | 3,709 | 78.7% | 21.3% |
| 12 | 684 | ▲24.4% | 67,675 | ▲25.8% | 332 | 37,222 | 109 | 6,158 | 4 | 644 | 239 | 23,651 | 582 | 60,362 | 102 | 7,313 | 83.5% | 16.5% |
| 計 | 10,061 | ▲9.6% | 974,149 | ▲11.6% | 4,994 | 565,958 | 2,295 | 120,134 | 45 | 3,999 | 2,727 | 284,058 | 8,819 | 902,831 | 1,242 | 71,318 | 76.7% | 23.3% |

注) %は前年同月比を示します。

※国土交通省が公表する数字と違うことがあります。

（第2表）新設住宅着工状況（今年全国との比較）

（単位：戸、㎡）

| 月 | 新設住宅総計 | | | | 利用関係別 | | | | | | | | | | | | | | | | 建て方別 | | | | | | | |
|----|---------|--------|--------|--------|---------|--------|-------|--------|---------|-------|-------|--------|-------|--------|-----|--------|---------|--------|-------|--------|---------|--------|-------|--------|---------|--------|-------|--------|
| | | | | | 持家 | | | | 貸家 | | | | 給与住宅 | | | | 分譲住宅 | | | | 一戸建・長屋建 | | | | 共同建 | | | |
| | 全国 | | 群馬県 | | 全国 | | 群馬県 | | 全国 | | 群馬県 | | 全国 | | 群馬県 | | 全国 | | 群馬県 | | 全国 | | 群馬県 | | 全国 | | 群馬県 | |
| | 戸数 | % | 戸数 | % | 戸数 | % | 戸数 | % | 戸数 | % | 戸数 | % | 戸数 | % | 戸数 | % | 戸数 | % | 戸数 | % | 戸数 | % | 戸数 | % | 戸数 | % | 戸数 | % |
| 1 | 63,604 | 6.6% | 826 | 20.4% | 16,627 | ▲8.3% | 386 | 6.0% | 24,041 | 4.2% | 240 | 50.9% | 238 | ▲26.3% | 2 | - | 22,698 | 25.0% | 198 | 21.5% | 31,979 | ▲5.2% | 697 | 17.9% | 31,625 | 21.9% | 129 | 35.8% |
| 2 | 64,426 | ▲0.3% | 687 | 4.4% | 18,368 | ▲4.6% | 375 | 1.1% | 24,692 | 4.7% | 181 | 110.5% | 304 | ▲5.0% | 1 | ▲80.0% | 21,062 | ▲1.8% | 130 | ▲33.7% | 35,223 | ▲1.3% | 609 | 0.7% | 29,203 | 0.9% | 78 | 47.2% |
| 3 | 73,693 | ▲3.2% | 965 | 2.8% | 17,484 | ▲13.6% | 405 | ▲21.4% | 32,585 | 0.9% | 198 | 32.0% | 571 | 34.4% | 1 | - | 23,053 | ▲0.4% | 361 | 31.8% | 35,921 | ▲8.4% | 709 | ▲19.4% | 37,772 | 2.4% | 256 | 333.9% |
| 4 | 67,250 | ▲11.9% | 800 | ▲30.1% | 18,597 | ▲11.6% | 432 | ▲9.8% | 28,685 | ▲2.8% | 118 | ▲48.9% | 267 | ▲48.9% | 1 | ▲87.5% | 19,701 | ▲21.8% | 249 | ▲41.5% | 36,508 | ▲8.4% | 774 | ▲10.8% | 30,742 | ▲15.6% | 26 | ▲90.6% |
| 5 | 69,561 | 3.5% | 919 | 1.1% | 18,853 | ▲11.5% | 466 | 3.8% | 28,695 | 10.5% | 219 | 9.0% | 624 | 78.8% | 4 | ▲81.0% | 21,389 | 9.1% | 230 | ▲3.4% | 36,710 | ▲5.9% | 799 | 0.8% | 32,851 | 16.4% | 120 | 3.4% |
| 6 | 71,015 | ▲4.8% | 872 | 2.5% | 20,325 | ▲12.4% | 437 | ▲0.2% | 30,112 | ▲0.6% | 168 | ▲4.0% | 494 | 13.6% | 1 | ▲50.0% | 20,084 | ▲2.9% | 266 | 12.7% | 38,673 | ▲9.5% | 794 | 5.6% | 32,342 | 1.5% | 78 | ▲21.2% |
| 7 | 68,151 | ▲6.7% | 877 | ▲17.9% | 20,689 | ▲7.8% | 474 | 9.7% | 30,170 | 1.6% | 227 | 56.6% | 313 | 6.1% | 4 | ▲81.0% | 16,979 | ▲17.6% | 172 | ▲63.4% | 38,691 | ▲7.0% | 824 | 7.4% | 29,460 | ▲6.3% | 53 | ▲82.4% |
| 8 | 70,389 | ▲9.4% | 947 | ▲8.9% | 20,984 | ▲5.9% | 483 | ▲3.4% | 29,364 | ▲6.2% | 260 | ▲7.1% | 454 | ▲52.4% | 1 | ▲50.0% | 19,587 | ▲15.5% | 203 | ▲21.3% | 39,256 | ▲5.5% | 866 | 1.4% | 31,133 | ▲13.9% | 81 | ▲56.5% |
| 9 | 68,941 | ▲6.8% | 842 | ▲3.9% | 19,527 | ▲12.3% | 415 | ▲9.8% | 29,735 | ▲2.9% | 190 | 11.8% | 413 | 17.7% | 4 | 33.3% | 19,266 | ▲7.3% | 233 | ▲4.1% | 38,250 | ▲8.8% | 743 | ▲4.3% | 30,691 | ▲4.2% | 99 | ▲1.0% |
| 10 | 71,769 | ▲6.3% | 887 | ▲6.6% | 18,078 | ▲17.2% | 400 | ▲18.4% | 31,671 | ▲1.0% | 240 | 6.2% | 438 | ▲52.3% | 6 | 500.0% | 21,582 | ▲1.2% | 241 | 3.4% | 37,564 | ▲10.8% | 763 | ▲11.0% | 34,205 | ▲0.7% | 124 | 33.3% |
| 11 | 66,238 | ▲8.5% | 755 | ▲31.6% | 17,789 | ▲17.3% | 389 | ▲23.0% | 28,275 | ▲5.3% | 145 | ▲57.4% | 596 | 72.3% | 16 | 433.3% | 19,578 | ▲5.2% | 205 | ▲19.9% | 36,887 | ▲10.5% | 659 | ▲30.3% | 29,351 | ▲5.8% | 96 | ▲39.2% |
| 12 | 64,586 | ▲4.0% | 684 | ▲24.4% | 17,031 | ▲13.8% | 332 | ▲24.4% | 25,869 | ▲3.6% | 109 | ▲37.4% | 366 | ▲16.1% | 4 | - | 21,320 | 5.5% | 239 | ▲18.2% | 34,251 | ▲8.8% | 582 | ▲26.0% | 30,335 | 2.2% | 102 | ▲14.3% |
| 計 | 819,623 | ▲4.6% | 10,061 | ▲9.6% | 224,352 | ▲11.4% | 4,994 | ▲8.2% | 343,894 | ▲0.3% | 2,295 | ▲1.8% | 5,078 | ▲10.5% | 45 | ▲31.8% | 246,299 | ▲3.6% | 2,727 | ▲17.0% | 439,913 | ▲7.6% | 8,819 | ▲6.9% | 379,710 | ▲0.9% | 1,242 | ▲25.0% |

注) %は前年同月比を示します。

※国土交通省が公表する数字と違うことがあります。

（第3表）新設住宅着工状況（前年との比較）

（単位：戸）

| 月 | 新設住宅総計 | | | 利用関係別 | | | | | | | | | | | | 建て方別 | | | | | |
|----|--------|--------|--------|-------|--------|-------|-------|--------|-------|------|--------|----|-------|--------|-------|---------|--------|-------|-------|--------|-------|
| | | | | 持家 | | | 貸家 | | | 給与住宅 | | | 分譲住宅 | | | 一戸建・長屋建 | | | 共同建 | | |
| | 今年 | | 前年 | 今年 | | 前年 | 今年 | | 前年 | 今年 | | 前年 | 今年 | | 前年 | 今年 | | 前年 | 今年 | | 前年 |
| | 戸数 | % | 戸数 | 戸数 | % | 戸数 | 戸数 | % | 戸数 | 戸数 | % | 戸数 | 戸数 | % | 戸数 | 戸数 | % | 戸数 | 戸数 | % | 戸数 |
| 1 | 826 | 20.4% | 686 | 386 | 6.0% | 364 | 240 | 50.9% | 159 | 2 | - | 0 | 198 | 21.5% | 163 | 697 | 17.9% | 591 | 129 | 35.8% | 95 |
| 2 | 687 | 4.4% | 658 | 375 | 1.1% | 371 | 181 | 110.5% | 86 | 1 | ▲80.0% | 5 | 130 | ▲33.7% | 196 | 609 | 0.7% | 605 | 78 | 47.2% | 53 |
| 3 | 965 | 2.8% | 939 | 405 | ▲21.4% | 515 | 198 | 32.0% | 150 | 1 | - | 0 | 361 | 31.8% | 274 | 709 | ▲19.4% | 880 | 256 | 333.9% | 59 |
| 4 | 800 | ▲30.1% | 1,144 | 432 | ▲9.8% | 479 | 118 | ▲48.9% | 231 | 1 | ▲87.5% | 8 | 249 | ▲41.5% | 426 | 774 | ▲10.8% | 868 | 26 | ▲90.6% | 276 |
| 5 | 919 | 1.1% | 909 | 466 | 3.8% | 449 | 219 | 9.0% | 201 | 4 | ▲81.0% | 21 | 230 | ▲3.4% | 238 | 799 | 0.8% | 793 | 120 | 3.4% | 116 |
| 6 | 872 | 2.5% | 851 | 437 | ▲0.2% | 438 | 168 | ▲4.0% | 175 | 1 | ▲50.0% | 2 | 266 | 12.7% | 236 | 794 | 5.6% | 752 | 78 | ▲21.2% | 99 |
| 7 | 877 | ▲17.9% | 1,068 | 474 | 9.7% | 432 | 227 | 56.6% | 145 | 4 | ▲81.0% | 21 | 172 | ▲63.4% | 470 | 824 | 7.4% | 767 | 53 | ▲82.4% | 301 |
| 8 | 947 | ▲8.9% | 1,040 | 483 | ▲3.4% | 500 | 260 | ▲7.1% | 280 | 1 | ▲50.0% | 2 | 203 | ▲21.3% | 258 | 866 | 1.4% | 854 | 81 | ▲56.5% | 186 |
| 9 | 842 | ▲3.9% | 876 | 415 | ▲9.8% | 460 | 190 | 11.8% | 170 | 4 | 33.3% | 3 | 233 | ▲4.1% | 243 | 743 | ▲4.3% | 776 | 99 | ▲1.0% | 100 |
| 10 | 887 | ▲6.6% | 950 | 400 | ▲18.4% | 490 | 240 | 6.2% | 226 | 6 | 500.0% | 1 | 241 | 3.4% | 233 | 763 | ▲11.0% | 857 | 124 | 33.3% | 93 |
| 11 | 755 | ▲31.6% | 1,104 | 389 | ▲23.0% | 505 | 145 | ▲57.4% | 340 | 16 | 433.3% | 3 | 205 | ▲19.9% | 256 | 659 | ▲30.3% | 946 | 96 | ▲39.2% | 158 |
| 12 | 684 | ▲24.4% | 905 | 332 | ▲24.4% | 439 | 109 | ▲37.4% | 174 | 4 | - | 0 | 239 | ▲18.2% | 292 | 582 | ▲26.0% | 786 | 102 | ▲14.3% | 119 |
| 計 | 10,061 | ▲9.6% | 11,130 | 4,994 | ▲8.2% | 5,442 | 2,295 | ▲1.8% | 2,337 | 45 | ▲31.8% | 66 | 2,727 | ▲17.0% | 3,285 | 8,819 | ▲6.9% | 9,475 | 1,242 | ▲25.0% | 1,655 |

注) %は前年同月比を示します。

※国土交通省が公表する数字と違うことがあります。

令和5年 群馬県 新設住宅着工戸数(年次)
(第4表) 新設住宅着工推移(利用関係別、建て方別)

(単位:戸、㎡)

| 年 | 全 国 | | 群馬県 | | | | | | | | | | | | | | | | | | |
|------|-----------|--------|--------|--------|------|-----------|--------|--------|-----------|--------|---------|-----|--------|-------|---------|--------|-----------|--------|---------|-------|-------|
| | | | 総計 | | | | | 利用関係別 | | | | | | | | | | 建て方別 | | | |
| | 戸数 | % | 戸数 | | 床面積 | | 持家 | | 貸家 | | 給与住宅 | | 分譲住宅 | | 一戸建・長屋建 | | 共同建 | | 持家系 | 借家系 | |
| | | | 戸数 | % | 全国比 | ㎡ | % | 戸数 | 床面積 | 戸数 | 床面積 | 戸数 | 床面積 | 戸数 | 床面積 | 戸数 | 床面積 | 戸数 | 床面積 | 持家+分譲 | 貸家+給与 |
| S 59 | 1,187,282 | 4.4% | 17,602 | 12.6% | 1.5% | 1,594,104 | 6.5% | 9,688 | 1,153,233 | 6,418 | 317,914 | 229 | 16,822 | 1,267 | 106,135 | 12,477 | 1,351,972 | 5,125 | 242,132 | 62.2% | 37.8% |
| S 60 | 1,236,072 | 4.1% | 18,664 | 6.0% | 1.5% | 1,608,285 | 0.9% | 9,307 | 1,133,385 | 7,959 | 360,853 | 234 | 17,386 | 1,164 | 96,661 | 11,558 | 1,288,659 | 7,106 | 319,626 | 56.1% | 43.9% |
| S 61 | 1,364,609 | 10.4% | 19,892 | 6.6% | 1.5% | 1,748,988 | 8.7% | 9,513 | 1,198,532 | 8,431 | 401,365 | 190 | 14,037 | 1,758 | 135,054 | 11,862 | 1,362,538 | 8,030 | 386,450 | 56.7% | 43.3% |
| S 62 | 1,674,300 | 22.7% | 23,009 | 15.7% | 1.4% | 2,032,681 | 16.2% | 10,908 | 1,388,449 | 10,258 | 487,909 | 247 | 17,077 | 1,596 | 139,246 | 13,877 | 1,604,857 | 9,132 | 427,824 | 54.3% | 45.7% |
| S 63 | 1,684,644 | 0.6% | 23,780 | 3.4% | 1.4% | 2,092,762 | 3.0% | 10,857 | 1,380,700 | 9,401 | 444,294 | 253 | 15,848 | 3,269 | 251,920 | 13,525 | 1,581,676 | 10,255 | 511,086 | 59.4% | 40.6% |
| H 1 | 1,662,612 | ▲1.3% | 27,177 | 14.3% | 1.6% | 2,279,099 | 8.9% | 10,961 | 1,424,436 | 11,350 | 487,578 | 312 | 17,533 | 4,554 | 349,552 | 13,790 | 1,671,392 | 13,387 | 607,707 | 57.1% | 42.9% |
| H 2 | 1,707,109 | 2.7% | 30,136 | 10.9% | 1.8% | 2,436,928 | 6.9% | 10,781 | 1,419,847 | 13,031 | 542,053 | 806 | 35,802 | 5,518 | 439,226 | 14,460 | 1,752,340 | 15,676 | 684,588 | 54.1% | 45.9% |
| H 3 | 1,370,126 | ▲19.7% | 28,800 | ▲4.4% | 2.1% | 2,494,246 | 2.4% | 10,247 | 1,374,786 | 10,032 | 452,588 | 907 | 49,696 | 7,614 | 617,176 | 14,186 | 1,743,284 | 14,614 | 750,962 | 62.0% | 38.0% |
| H 4 | 1,402,590 | 2.4% | 23,651 | ▲17.9% | 1.7% | 2,201,786 | ▲11.7% | 10,433 | 1,424,441 | 9,010 | 424,444 | 557 | 34,024 | 3,651 | 318,877 | 13,434 | 1,706,066 | 10,217 | 495,720 | 59.5% | 40.5% |
| H 5 | 1,485,684 | 5.9% | 23,034 | ▲2.6% | 1.6% | 2,293,623 | 4.2% | 12,089 | 1,641,107 | 8,034 | 386,614 | 433 | 22,928 | 2,478 | 242,974 | 14,941 | 1,908,482 | 8,093 | 385,141 | 63.2% | 36.8% |
| H 6 | 1,570,252 | 5.7% | 22,636 | ▲1.7% | 1.4% | 2,371,081 | 3.4% | 12,652 | 1,747,659 | 7,370 | 371,484 | 444 | 29,966 | 2,170 | 221,972 | 15,294 | 2,001,046 | 7,342 | 370,035 | 65.5% | 34.5% |
| H 7 | 1,470,330 | ▲6.4% | 22,251 | ▲1.7% | 1.5% | 2,218,675 | ▲6.4% | 11,525 | 1,579,465 | 8,062 | 387,969 | 348 | 15,451 | 2,316 | 235,790 | 14,029 | 1,819,037 | 8,222 | 399,638 | 62.2% | 37.8% |
| H 8 | 1,643,266 | 11.8% | 26,184 | 17.7% | 1.6% | 2,716,439 | 22.4% | 14,677 | 2,032,337 | 9,143 | 451,772 | 262 | 16,892 | 2,102 | 215,438 | 17,479 | 2,288,467 | 8,705 | 427,972 | 64.1% | 35.9% |
| H 9 | 1,387,014 | ▲15.6% | 23,011 | ▲12.1% | 1.7% | 2,211,257 | ▲18.6% | 11,142 | 1,505,528 | 9,023 | 438,144 | 211 | 11,475 | 2,635 | 256,110 | 14,137 | 1,776,720 | 8,874 | 434,537 | 59.9% | 40.1% |
| H 10 | 1,198,295 | ▲13.6% | 19,367 | ▲15.8% | 1.6% | 1,926,979 | ▲12.9% | 10,273 | 1,383,445 | 6,841 | 341,963 | 261 | 19,578 | 1,992 | 181,993 | 12,664 | 1,596,587 | 6,703 | 330,392 | 63.3% | 36.7% |
| H 11 | 1,214,601 | 1.4% | 19,291 | ▲0.4% | 1.6% | 2,015,574 | 4.6% | 11,172 | 1,520,255 | 6,086 | 307,586 | 222 | 11,317 | 1,811 | 176,416 | 13,734 | 1,738,813 | 5,557 | 276,761 | 67.3% | 32.7% |
| H 12 | 1,229,843 | 1.3% | 18,057 | ▲6.4% | 1.5% | 1,912,741 | ▲5.1% | 10,710 | 1,442,528 | 5,461 | 285,594 | 190 | 11,226 | 1,696 | 173,393 | 13,217 | 1,658,560 | 4,840 | 254,181 | 68.7% | 31.3% |
| H 13 | 1,173,858 | ▲4.6% | 16,966 | ▲6.0% | 1.4% | 1,643,904 | ▲14.1% | 8,583 | 1,150,244 | 6,560 | 320,489 | 99 | 5,299 | 1,724 | 167,872 | 11,353 | 1,382,644 | 5,613 | 261,260 | 60.8% | 39.2% |
| H 14 | 1,151,016 | ▲1.9% | 16,733 | ▲1.4% | 1.5% | 1,585,178 | ▲3.6% | 8,042 | 1,075,179 | 6,631 | 320,350 | 187 | 13,370 | 1,873 | 176,279 | 10,796 | 1,291,358 | 5,937 | 293,820 | 59.3% | 40.7% |
| H 15 | 1,160,083 | 0.8% | 17,179 | 2.7% | 1.5% | 1,636,632 | 3.2% | 8,502 | 1,134,048 | 6,583 | 315,599 | 213 | 16,554 | 1,881 | 170,431 | 12,418 | 1,398,025 | 4,761 | 238,607 | 60.4% | 39.6% |
| H 16 | 1,189,049 | 2.5% | 17,747 | 3.3% | 1.5% | 1,724,818 | 5.4% | 8,864 | 1,168,867 | 6,446 | 303,171 | 117 | 9,990 | 2,320 | 242,790 | 12,541 | 1,443,107 | 5,206 | 281,711 | 63.0% | 37.0% |
| H 17 | 1,236,122 | 4.0% | 16,387 | ▲7.7% | 1.3% | 1,589,373 | ▲7.9% | 8,115 | 1,071,264 | 5,626 | 257,713 | 130 | 9,417 | 2,516 | 250,979 | 11,547 | 1,353,319 | 4,840 | 236,054 | 64.9% | 35.1% |
| H 18 | 1,290,391 | 4.4% | 19,130 | 16.7% | 1.5% | 1,830,711 | 15.2% | 8,822 | 1,149,030 | 6,655 | 299,458 | 156 | 11,388 | 3,497 | 370,835 | 13,141 | 1,490,219 | 5,989 | 340,492 | 64.4% | 35.6% |
| H 19 | 1,060,741 | ▲17.8% | 15,784 | ▲17.5% | 1.5% | 1,540,203 | ▲15.9% | 7,714 | 998,486 | 5,110 | 235,513 | 139 | 9,519 | 2,821 | 296,685 | 11,136 | 1,270,112 | 4,648 | 270,091 | 66.7% | 33.3% |
| H 20 | 1,093,485 | 3.1% | 16,613 | 5.3% | 1.5% | 1,522,033 | ▲1.2% | 8,024 | 1,025,547 | 6,525 | 288,420 | 189 | 11,168 | 1,875 | 196,898 | 11,913 | 1,296,749 | 4,700 | 225,284 | 59.6% | 40.4% |
| H 21 | 788,410 | ▲27.9% | 12,536 | ▲24.5% | 1.6% | 1,189,326 | ▲21.9% | 6,632 | 841,369 | 4,576 | 213,511 | 142 | 9,175 | 1,186 | 125,271 | 10,073 | 1,078,186 | 2,463 | 111,140 | 62.4% | 37.6% |
| H 22 | 813,126 | 3.1% | 12,625 | 0.7% | 1.6% | 1,240,841 | 4.3% | 6,938 | 870,196 | 4,106 | 208,611 | 84 | 5,560 | 1,497 | 156,474 | 10,730 | 1,141,532 | 1,895 | 99,309 | 66.8% | 33.2% |
| H 23 | 834,117 | 2.6% | 12,041 | ▲4.6% | 1.4% | 1,210,096 | ▲2.5% | 6,915 | 861,444 | 3,573 | 185,153 | 33 | 2,261 | 1,520 | 161,238 | 10,651 | 1,140,663 | 1,390 | 69,433 | 70.1% | 29.9% |
| H 24 | 882,797 | 5.8% | 12,114 | 0.6% | 1.4% | 1,202,071 | ▲0.7% | 6,823 | 844,270 | 3,620 | 187,423 | 72 | 3,147 | 1,599 | 167,231 | 10,600 | 1,124,755 | 1,514 | 77,316 | 69.5% | 30.5% |
| H 25 | 980,025 | 11.0% | 13,776 | 13.7% | 1.4% | 1,405,938 | 17.0% | 7,941 | 972,724 | 3,492 | 189,588 | 14 | 1,363 | 2,329 | 242,263 | 12,151 | 1,304,783 | 1,625 | 101,155 | 74.5% | 25.5% |
| H 26 | 892,261 | ▲9.0% | 12,173 | ▲11.6% | 1.4% | 1,208,453 | ▲14.0% | 6,643 | 807,797 | 3,457 | 181,431 | 46 | 2,211 | 2,027 | 217,014 | 11,048 | 1,155,497 | 1,125 | 52,956 | 71.2% | 28.8% |
| H 27 | 909,299 | 1.9% | 13,174 | 8.2% | 1.4% | 1,249,195 | 3.4% | 6,682 | 808,662 | 4,449 | 224,916 | 45 | 2,358 | 1,998 | 213,259 | 11,526 | 1,177,018 | 1,648 | 72,177 | 65.9% | 34.1% |
| H 28 | 967,705 | 6.4% | 13,610 | 3.3% | 1.4% | 1,283,595 | 2.8% | 6,623 | 795,261 | 4,741 | 241,095 | 12 | 1,839 | 2,234 | 245,400 | 11,998 | 1,212,100 | 1,612 | 71,495 | 65.1% | 34.9% |
| H 29 | 964,641 | ▲0.3% | 14,549 | 6.9% | 1.5% | 1,343,612 | 4.7% | 6,484 | 779,681 | 5,232 | 263,144 | 39 | 2,689 | 2,794 | 298,098 | 12,185 | 1,227,338 | 2,364 | 116,274 | 63.8% | 36.2% |
| H 30 | 942,370 | ▲2.3% | 12,861 | ▲11.6% | 1.4% | 1,240,129 | ▲7.7% | 6,202 | 739,672 | 4,029 | 213,060 | 39 | 3,056 | 2,591 | 284,341 | 11,352 | 1,167,394 | 1,509 | 72,735 | 68.4% | 31.6% |
| R 1 | 905,123 | ▲4.0% | 11,935 | ▲7.2% | 1.3% | 1,199,776 | ▲3.3% | 6,354 | 751,691 | 2,921 | 158,578 | 60 | 3,760 | 2,600 | 285,030 | 10,910 | 1,147,276 | 1,025 | 52,500 | 75.0% | 24.9% |
| R 2 | 815,340 | ▲9.9% | 10,179 | ▲14.7% | 1.2% | 1,033,318 | ▲13.9% | 5,502 | 647,371 | 2,031 | 105,734 | 65 | 3,358 | 2,581 | 276,855 | 8,957 | 960,247 | 1,222 | 73,071 | 79.4% | 20.6% |
| R 3 | 856,484 | 5.0% | 10,948 | 7.6% | 1.3% | 1,105,397 | 7.0% | 6,088 | 710,394 | 2,122 | 104,304 | 16 | 1,528 | 2,722 | 289,171 | 9,714 | 1,044,242 | 1,234 | 61,155 | 80.5% | 19.5% |
| R 4 | 859,529 | 0.4% | 11,130 | 1.7% | 1.3% | 1,101,886 | ▲0.3% | 5,442 | 628,457 | 2,337 | 122,247 | 66 | 4,871 | 3,285 | 346,311 | 9,475 | 1,001,775 | 1,655 | 100,111 | 78.4% | 21.6% |
| R 5 | 819,623 | ▲4.6% | 10,061 | ▲9.6% | 1.2% | 974,149 | ▲11.6% | 4,994 | 565,958 | 2,295 | 120,134 | 45 | 3,999 | 2,727 | 284,058 | 8,819 | 902,831 | 1,242 | 71,318 | 76.7% | 23.3% |

注) %は前年同月比を示します。

※国土交通省が公表する数字と違うことがあります。

令和5年 群馬県 新設住宅着工戸数（年次）

（第5表）1戸あたりの床面積の推移

（単位：㎡）

| 年 | 総計 | | 利用関係別 | | | | | | | | 建て方別(県) | |
|------|------|-------|-------|-------|------|------|------|-------|------|-------|---------|------|
| | | | 持家 | | 貸家 | | 給与住宅 | | 分譲住宅 | | 一戸建 | 共同建 |
| | 全国 | 県 | 全国 | 県 | 全国 | 県 | 全国 | 県 | 全国 | 県 | ・長屋建 | |
| S 59 | 84.4 | 90.6 | 125.3 | 119.0 | 46.6 | 49.5 | 87.3 | 73.5 | 77.0 | 83.8 | 108.4 | 47.2 |
| S 60 | 83.4 | 86.2 | 126.9 | 121.8 | 46.7 | 45.3 | 88.3 | 74.3 | 79.2 | 83.0 | 111.5 | 45.0 |
| S 61 | 81.3 | 87.9 | 128.9 | 126.0 | 46.1 | 47.6 | 86.8 | 73.9 | 81.2 | 76.8 | 114.9 | 48.1 |
| S 62 | 79.2 | 88.3 | 130.9 | 127.3 | 44.9 | 47.6 | 84.0 | 69.1 | 83.3 | 87.2 | 115.6 | 46.8 |
| S 63 | 79.9 | 88.0 | 131.1 | 127.2 | 47.1 | 47.3 | 75.4 | 62.6 | 87.4 | 77.1 | 116.9 | 49.8 |
| H 1 | 81.2 | 83.9 | 133.4 | 130.0 | 43.3 | 43.0 | 74.2 | 56.2 | 89.5 | 76.8 | 121.2 | 45.4 |
| H 2 | 80.5 | 80.9 | 136.3 | 131.7 | 45.1 | 41.6 | 73.0 | 44.4 | 85.0 | 79.6 | 121.2 | 43.7 |
| H 3 | 85.6 | 86.6 | 137.2 | 134.2 | 46.9 | 45.1 | 67.8 | 54.8 | 87.5 | 81.1 | 122.9 | 51.4 |
| H 4 | 85.8 | 93.1 | 137.4 | 136.5 | 48.5 | 47.1 | 69.6 | 61.1 | 90.4 | 87.3 | 127.0 | 48.5 |
| H 5 | 88.6 | 99.6 | 137.4 | 135.8 | 50.4 | 48.1 | 69.8 | 53.0 | 89.0 | 98.1 | 127.7 | 47.6 |
| H 6 | 92.7 | 104.7 | 138.2 | 138.1 | 52.4 | 50.4 | 73.3 | 67.5 | 88.7 | 102.3 | 130.8 | 50.4 |
| H 7 | 92.9 | 99.7 | 137.1 | 137.0 | 52.6 | 48.1 | 69.3 | 44.4 | 90.2 | 101.8 | 129.7 | 48.6 |
| H 8 | 96.1 | 103.7 | 140.8 | 138.5 | 52.8 | 49.4 | 70.4 | 64.5 | 92.8 | 102.5 | 130.9 | 49.2 |
| H 9 | 93.1 | 96.1 | 139.6 | 135.1 | 52.5 | 48.6 | 71.9 | 54.4 | 92.7 | 97.2 | 125.7 | 49.0 |
| H 10 | 93.3 | 99.5 | 138.9 | 134.7 | 51.4 | 50.0 | 75.1 | 75.0 | 92.4 | 91.4 | 126.1 | 49.3 |
| H 11 | 97.1 | 104.5 | 139.3 | 136.1 | 52.5 | 50.5 | 69.8 | 51.0 | 94.6 | 97.4 | 126.6 | 49.8 |
| H 12 | 97.5 | 105.9 | 139.5 | 134.7 | 43.2 | 52.3 | 70.4 | 59.1 | 97.1 | 102.2 | 125.5 | 52.5 |
| H 13 | 93.6 | 96.9 | 137.2 | 134.0 | 51.9 | 48.9 | 72.2 | 53.5 | 98.2 | 97.4 | 121.8 | 46.5 |
| H 14 | 91.0 | 94.7 | 136.2 | 133.7 | 50.4 | 48.3 | 70.2 | 71.5 | 96.8 | 94.1 | 119.6 | 49.5 |
| H 15 | 89.7 | 95.3 | 135.0 | 133.4 | 48.8 | 47.9 | 70.8 | 77.7 | 95.1 | 90.6 | 112.6 | 50.1 |
| H 16 | 88.8 | 97.2 | 134.4 | 131.9 | 47.9 | 47.0 | 66.5 | 85.4 | 95.4 | 104.7 | 115.1 | 54.1 |
| H 17 | 86.2 | 97.0 | 133.9 | 132.0 | 46.8 | 45.8 | 69.3 | 72.4 | 94.8 | 99.8 | 117.2 | 48.8 |
| H 18 | 84.3 | 95.7 | 133.3 | 130.2 | 46.0 | 45.0 | 67.0 | 73.0 | 93.5 | 106.0 | 113.4 | 56.9 |
| H 19 | 85.5 | 97.6 | 132.0 | 129.4 | 45.9 | 46.1 | 66.5 | 68.5 | 95.6 | 105.2 | 114.1 | 58.1 |
| H 20 | 83.0 | 91.6 | 130.5 | 127.8 | 45.1 | 44.2 | 64.0 | 59.1 | 92.0 | 105.0 | 108.9 | 47.9 |
| H 21 | 86.7 | 94.9 | 127.8 | 126.9 | 47.5 | 46.7 | 56.6 | 64.6 | 94.3 | 105.6 | 107.0 | 45.1 |
| H 22 | 89.7 | 98.3 | 126.2 | 125.4 | 49.8 | 50.8 | 63.1 | 66.2 | 94.2 | 104.5 | 106.4 | 52.4 |
| H 23 | 90.3 | 100.5 | 125.6 | 124.6 | 51.1 | 51.8 | 69.2 | 68.5 | 92.9 | 106.1 | 107.1 | 50.0 |
| H 24 | 88.8 | 99.2 | 124.9 | 123.7 | 51.0 | 51.8 | 70.1 | 43.7 | 92.6 | 104.6 | 106.1 | 51.1 |
| H 25 | 89.0 | 102.1 | 125.1 | 122.5 | 51.0 | 54.3 | 81.5 | 97.4 | 91.9 | 104.0 | 107.4 | 62.2 |
| H 26 | 84.8 | 99.3 | 123.9 | 121.6 | 49.9 | 52.5 | 69.4 | 48.1 | 91.7 | 107.1 | 104.6 | 47.1 |
| H 27 | 82.5 | 94.8 | 122.9 | 121.0 | 48.4 | 50.6 | 66.1 | 52.4 | 89.1 | 106.7 | 102.1 | 43.8 |
| H 28 | 80.8 | 94.3 | 122.0 | 120.1 | 46.9 | 50.9 | 73.5 | 153.3 | 89.6 | 109.8 | 101.0 | 44.4 |
| H 29 | 80.4 | 92.4 | 120.8 | 120.2 | 46.6 | 50.3 | 68.0 | 68.9 | 91.1 | 106.7 | 100.7 | 49.2 |
| H 30 | 79.9 | 96.4 | 119.9 | 119.3 | 46.0 | 52.9 | 63.9 | 78.4 | 88.6 | 109.7 | 101.9 | 48.4 |
| R 1 | 82.7 | 100.5 | 119.1 | 118.3 | 47.4 | 54.3 | 65.6 | 74.6 | 89.1 | 109.6 | 105.2 | 51.2 |
| R 2 | 81.5 | 101.5 | 118.0 | 117.7 | 46.0 | 52.1 | 60.0 | 51.7 | 87.9 | 107.3 | 107.2 | 59.8 |
| R 3 | 82.5 | 101.0 | 117.5 | 116.7 | 46.2 | 49.2 | 65.1 | 95.5 | 89.8 | 106.2 | 107.5 | 49.6 |
| R 4 | 80.3 | 99.0 | 116.3 | 115.5 | 47.3 | 52.3 | 71.7 | 73.8 | 89.3 | 105.4 | 105.7 | 60.5 |
| R 5 | 78.3 | 96.8 | 114.2 | 113.3 | 47.9 | 52.3 | 70.4 | 88.9 | 88.2 | 104.2 | 102.4 | 57.4 |

※国土交通省が公表する数字と違うことがあります。

令和5年 群馬県 新設住宅着工戸数 (年次)
(第7表) 地域別新設住宅着工状況 (利用関係別)

(単位：戸)

| 市部・郡部別 | | 1月 | 2月 | 3月 | 4月 | 5月 | 6月 | 7月 | 8月 | 9月 | 10月 | 11月 | 12月 | 年計 | 前年比 |
|--------|----|-----|-----|-----|-----|-----|-----|-----|-----|-----|-----|-----|-----|--------|---------|
| 県計 | 合計 | 826 | 687 | 965 | 800 | 919 | 872 | 877 | 947 | 842 | 887 | 755 | 684 | 10,061 | ▲9.6% |
| | 持家 | 386 | 375 | 405 | 432 | 466 | 437 | 474 | 483 | 415 | 400 | 389 | 332 | 4,994 | ▲8.2% |
| | 貸家 | 240 | 181 | 198 | 118 | 219 | 168 | 227 | 260 | 190 | 240 | 145 | 109 | 2,295 | ▲1.8% |
| | 給与 | 2 | 1 | 1 | 1 | 4 | 1 | 4 | 1 | 4 | 6 | 16 | 4 | 45 | ▲31.8% |
| | 分譲 | 198 | 130 | 361 | 249 | 230 | 266 | 172 | 203 | 233 | 241 | 205 | 239 | 2,727 | ▲17.0% |
| 市部計 | 合計 | 770 | 620 | 844 | 703 | 805 | 762 | 797 | 831 | 735 | 820 | 676 | 615 | 8,978 | ▲9.0% |
| | 持家 | 341 | 321 | 340 | 364 | 367 | 377 | 422 | 419 | 330 | 344 | 324 | 281 | 4,230 | ▲8.6% |
| | 貸家 | 238 | 172 | 158 | 115 | 217 | 139 | 216 | 256 | 188 | 240 | 142 | 101 | 2,182 | ▲1.0% |
| | 給与 | 2 | 0 | 0 | 0 | 3 | 1 | 3 | 1 | 3 | 5 | 16 | 2 | 36 | ▲29.4% |
| | 分譲 | 189 | 127 | 346 | 224 | 218 | 245 | 156 | 155 | 214 | 231 | 194 | 231 | 2,530 | ▲15.3% |
| 郡部計 | 合計 | 56 | 67 | 121 | 97 | 114 | 110 | 80 | 116 | 107 | 67 | 79 | 69 | 1,083 | ▲14.0% |
| | 持家 | 45 | 54 | 65 | 68 | 99 | 60 | 52 | 64 | 85 | 56 | 65 | 51 | 764 | ▲6.0% |
| | 貸家 | 2 | 9 | 40 | 3 | 2 | 29 | 11 | 4 | 2 | 0 | 3 | 8 | 113 | ▲15.0% |
| | 給与 | 0 | 1 | 1 | 1 | 1 | 0 | 1 | 0 | 1 | 1 | 0 | 2 | 9 | ▲40.0% |
| | 分譲 | 9 | 3 | 15 | 25 | 12 | 21 | 16 | 48 | 19 | 10 | 11 | 8 | 197 | ▲33.9% |
| 前橋市 | 合計 | 151 | 151 | 161 | 129 | 156 | 132 | 165 | 145 | 162 | 227 | 163 | 131 | 1,873 | ▲3.2% |
| | 持家 | 67 | 62 | 75 | 66 | 58 | 80 | 85 | 76 | 59 | 89 | 77 | 74 | 868 | ▲6.2% |
| | 貸家 | 48 | 62 | 58 | 22 | 61 | 18 | 39 | 33 | 22 | 37 | 33 | 28 | 461 | ▲22.8% |
| | 給与 | 0 | 0 | 0 | 0 | 0 | 0 | 2 | 1 | 2 | 3 | 0 | 1 | 9 | 50.0% |
| | 分譲 | 36 | 27 | 28 | 41 | 37 | 34 | 39 | 35 | 79 | 98 | 53 | 28 | 535 | 31.8% |
| 高崎市 | 合計 | 228 | 159 | 341 | 155 | 175 | 241 | 236 | 223 | 191 | 176 | 223 | 233 | 2,581 | ▲12.7% |
| | 持家 | 79 | 85 | 86 | 68 | 75 | 91 | 105 | 94 | 83 | 86 | 89 | 72 | 1,013 | ▲11.8% |
| | 貸家 | 119 | 55 | 51 | 45 | 54 | 62 | 94 | 95 | 67 | 30 | 91 | 41 | 804 | ▲0.6% |
| | 給与 | 0 | 0 | 0 | 0 | 0 | 0 | 0 | 0 | 0 | 0 | 0 | 0 | 0 | ▲100.0% |
| | 分譲 | 30 | 19 | 204 | 42 | 46 | 88 | 37 | 34 | 41 | 60 | 43 | 120 | 764 | ▲23.2% |
| 桐生市 | 合計 | 16 | 20 | 22 | 23 | 23 | 53 | 25 | 46 | 22 | 17 | 29 | 13 | 309 | ▲6.9% |
| | 持家 | 12 | 13 | 18 | 20 | 12 | 22 | 12 | 29 | 17 | 11 | 20 | 10 | 196 | 7.7% |
| | 貸家 | 0 | 6 | 0 | 0 | 5 | 14 | 4 | 10 | 0 | 0 | 8 | 0 | 47 | ▲14.5% |
| | 給与 | 0 | 0 | 0 | 0 | 0 | 0 | 0 | 0 | 0 | 0 | 0 | 0 | 0 | - |
| | 分譲 | 4 | 1 | 4 | 3 | 6 | 17 | 9 | 7 | 5 | 6 | 1 | 3 | 66 | ▲30.5% |
| 伊勢崎市 | 合計 | 145 | 66 | 89 | 124 | 184 | 139 | 158 | 172 | 118 | 119 | 38 | 67 | 1,419 | 2.1% |
| | 持家 | 63 | 33 | 39 | 59 | 89 | 63 | 82 | 84 | 73 | 42 | 11 | 38 | 676 | 8.5% |
| | 貸家 | 41 | 18 | 10 | 21 | 35 | 20 | 52 | 56 | 15 | 56 | 0 | 12 | 336 | 80.6% |
| | 給与 | 1 | 0 | 0 | 0 | 2 | 0 | 1 | 0 | 0 | 1 | 0 | 0 | 5 | 400.0% |
| | 分譲 | 40 | 15 | 40 | 44 | 58 | 56 | 23 | 32 | 30 | 20 | 27 | 17 | 402 | ▲30.7% |
| 太田市 | 合計 | 125 | 117 | 82 | 165 | 131 | 65 | 125 | 90 | 136 | 163 | 121 | 77 | 1,397 | 1.6% |
| | 持家 | 46 | 47 | 29 | 91 | 51 | 36 | 59 | 54 | 36 | 44 | 48 | 38 | 579 | ▲12.1% |
| | 貸家 | 14 | 29 | 3 | 17 | 27 | 1 | 25 | 12 | 65 | 86 | 9 | 6 | 294 | 28.4% |
| | 給与 | 0 | 0 | 0 | 0 | 0 | 0 | 0 | 0 | 0 | 0 | 16 | 0 | 16 | ▲11.1% |
| | 分譲 | 65 | 41 | 50 | 57 | 53 | 28 | 41 | 24 | 35 | 33 | 48 | 33 | 508 | 8.3% |
| 沼田市 | 合計 | 7 | 4 | 18 | 3 | 11 | 19 | 5 | 12 | 17 | 6 | 6 | 21 | 129 | ▲20.9% |
| | 持家 | 4 | 2 | 12 | 3 | 6 | 7 | 4 | 11 | 8 | 6 | 6 | 6 | 75 | ▲35.9% |
| | 貸家 | 0 | 0 | 4 | 0 | 0 | 10 | 0 | 0 | 6 | 0 | 0 | 0 | 20 | ▲37.5% |
| | 給与 | 0 | 0 | 0 | 0 | 0 | 0 | 0 | 0 | 0 | 0 | 0 | 0 | 0 | ▲100.0% |
| | 分譲 | 3 | 2 | 2 | 0 | 5 | 2 | 1 | 1 | 3 | 0 | 0 | 15 | 34 | 183.3% |
| 館林市 | 合計 | 16 | 23 | 47 | 28 | 41 | 19 | 11 | 51 | 29 | 23 | 17 | 29 | 334 | ▲16.3% |
| | 持家 | 11 | 15 | 15 | 16 | 15 | 14 | 11 | 5 | 15 | 15 | 14 | 13 | 159 | ▲8.1% |
| | 貸家 | 0 | 0 | 24 | 0 | 24 | 0 | 0 | 40 | 12 | 2 | 0 | 12 | 114 | 16.3% |
| | 給与 | 0 | 0 | 0 | 0 | 1 | 1 | 0 | 0 | 0 | 0 | 0 | 0 | 2 | ▲50.0% |
| | 分譲 | 5 | 8 | 8 | 12 | 1 | 4 | 0 | 6 | 2 | 6 | 3 | 4 | 59 | ▲52.4% |
| 渋川市 | 合計 | 16 | 16 | 24 | 18 | 25 | 19 | 13 | 20 | 16 | 17 | 17 | 9 | 210 | ▲44.4% |
| | 持家 | 13 | 13 | 18 | 11 | 20 | 19 | 13 | 17 | 7 | 17 | 17 | 8 | 173 | ▲7.5% |
| | 貸家 | 0 | 0 | 6 | 0 | 0 | 0 | 0 | 0 | 0 | 0 | 0 | 0 | 6 | ▲90.2% |
| | 給与 | 1 | 0 | 0 | 0 | 0 | 0 | 0 | 0 | 0 | 0 | 0 | 1 | 2 | ▲33.3% |
| | 分譲 | 2 | 3 | 0 | 7 | 5 | 0 | 0 | 3 | 9 | 0 | 0 | 0 | 29 | ▲77.2% |
| 藤岡市 | 合計 | 23 | 19 | 21 | 6 | 24 | 12 | 17 | 24 | 5 | 18 | 20 | 8 | 197 | ▲34.3% |
| | 持家 | 14 | 15 | 17 | 2 | 13 | 9 | 13 | 13 | 3 | 15 | 16 | 6 | 136 | ▲32.0% |
| | 貸家 | 8 | 0 | 0 | 0 | 10 | 0 | 0 | 10 | 0 | 3 | 1 | 1 | 33 | ▲45.9% |
| | 給与 | 0 | 0 | 0 | 0 | 0 | 0 | 0 | 0 | 0 | 0 | 0 | 0 | 0 | ▲100.0% |
| | 分譲 | 1 | 4 | 4 | 4 | 1 | 3 | 4 | 1 | 2 | 0 | 3 | 1 | 28 | ▲24.3% |
| 富岡市 | 合計 | 12 | 13 | 8 | 13 | 7 | 15 | 5 | 18 | 7 | 8 | 6 | 16 | 128 | ▲36.6% |
| | 持家 | 12 | 12 | 8 | 12 | 6 | 12 | 5 | 16 | 7 | 5 | 6 | 11 | 112 | ▲5.1% |
| | 貸家 | 0 | 0 | 0 | 0 | 0 | 0 | 0 | 0 | 0 | 0 | 0 | 1 | 1 | ▲96.9% |
| | 給与 | 0 | 0 | 0 | 0 | 0 | 0 | 0 | 0 | 0 | 1 | 0 | 0 | 1 | #DIV/0! |
| | 分譲 | 0 | 1 | 0 | 1 | 1 | 3 | 0 | 2 | 0 | 2 | 0 | 4 | 14 | ▲73.1% |
| 安中市 | 合計 | 18 | 16 | 17 | 20 | 9 | 18 | 19 | 11 | 13 | 35 | 24 | 11 | 211 | ▲17.3% |
| | 持家 | 8 | 13 | 13 | 9 | 6 | 11 | 17 | 11 | 10 | 9 | 13 | 5 | 125 | ▲18.3% |
| | 貸家 | 8 | 0 | 0 | 0 | 0 | 0 | 2 | 0 | 1 | 22 | 0 | 0 | 33 | ▲10.8% |
| | 給与 | 0 | 0 | 0 | 0 | 0 | 0 | 0 | 0 | 0 | 0 | 0 | 0 | 0 | ▲100.0% |
| | 分譲 | 2 | 3 | 4 | 11 | 3 | 7 | 0 | 0 | 2 | 4 | 11 | 6 | 53 | ▲5.4% |
| みどり市 | 合計 | 13 | 16 | 14 | 19 | 19 | 30 | 18 | 19 | 19 | 11 | 12 | | 190 | 1.6% |
| | 持家 | 12 | 11 | 10 | 7 | 16 | 13 | 16 | 9 | 12 | 5 | 7 | | 118 | ▲17.5% |
| | 貸家 | 0 | 2 | 2 | 10 | 1 | 14 | 0 | 0 | 0 | 4 | 0 | | 33 | 371.4% |
| | 給与 | 0 | 0 | 0 | 0 | 0 | 0 | 0 | 0 | 1 | 0 | 0 | | 1 | ▲66.7% |
| | 分譲 | 1 | 3 | 2 | 2 | 2 | 3 | 2 | 10 | 6 | 2 | 5 | | 38 | 11.8% |

令和5年 群馬県 新設住宅着工戸数（年次）
（第7表）地域別新設住宅着工状況（利用関係別）

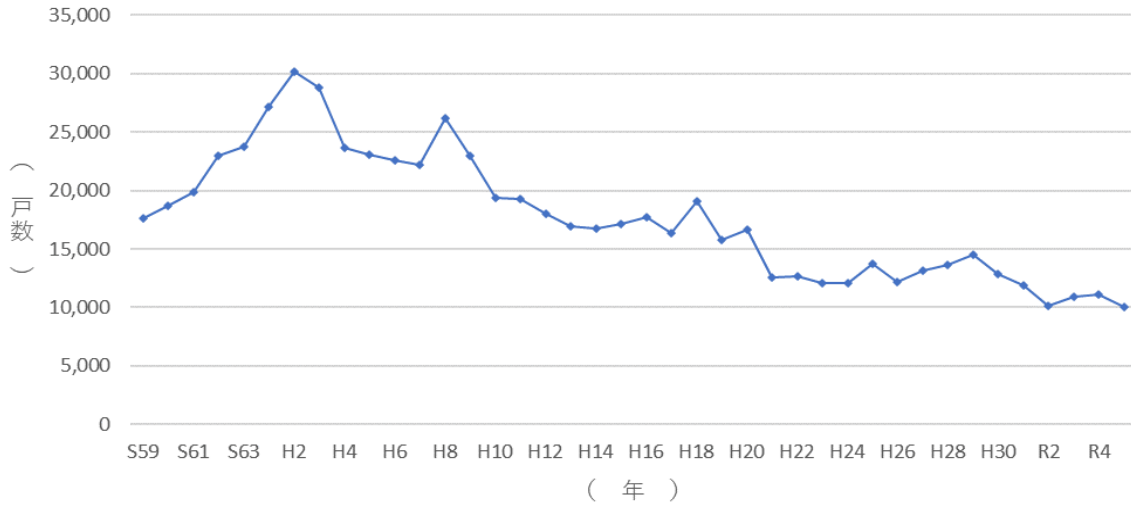
（単位：戸）

| 市部・郡部別 | | 1月 | 2月 | 3月 | 4月 | 5月 | 6月 | 7月 | 8月 | 9月 | 10月 | 11月 | 12月 | 年計 | 前年比 |
|--------|------|----|----|----|----|----|----|----|----|----|-----|-----|-----|-----|---------|
| 高山村 | 合計 | 0 | 1 | 0 | 2 | 2 | 1 | 0 | 1 | 0 | 4 | 2 | 2 | 15 | 87.5% |
| | 持家 | 0 | 1 | 0 | 2 | 2 | 1 | 0 | 1 | 0 | 4 | 2 | 1 | 14 | 75.0% |
| | 貸家 | 0 | 0 | 0 | 0 | 0 | 0 | 0 | 0 | 0 | 0 | 0 | 0 | 0 | - |
| | 給与分譲 | 0 | 0 | 0 | 0 | 0 | 0 | 0 | 0 | 0 | 0 | 0 | 1 | 1 | - |
| 東吾妻町 | 合計 | 2 | 3 | 4 | 6 | 2 | 1 | 0 | 1 | 3 | 0 | 0 | 0 | 22 | ▲45.0% |
| | 持家 | 2 | 3 | 4 | 6 | 2 | 1 | 0 | 1 | 3 | 0 | 0 | 0 | 22 | ▲45.0% |
| | 貸家 | 0 | 0 | 0 | 0 | 0 | 0 | 0 | 0 | 0 | 0 | 0 | 0 | 0 | - |
| | 給与分譲 | 0 | 0 | 0 | 0 | 0 | 0 | 0 | 0 | 0 | 0 | 0 | 0 | 0 | - |
| 利根郡 | 合計 | 0 | 2 | 31 | 7 | 16 | 11 | 4 | 5 | 9 | 10 | 5 | 3 | 103 | 27.2% |
| | 持家 | 0 | 2 | 10 | 7 | 16 | 11 | 4 | 5 | 8 | 9 | 5 | 3 | 80 | 45.5% |
| | 貸家 | 0 | 0 | 20 | 0 | 0 | 0 | 0 | 0 | 0 | 0 | 0 | 0 | 20 | ▲16.7% |
| | 給与分譲 | 0 | 0 | 1 | 0 | 0 | 0 | 0 | 0 | 1 | 1 | 0 | 0 | 3 | 200.0% |
| 片品村 | 合計 | 0 | 0 | 0 | 1 | 0 | 0 | 1 | 0 | 0 | 0 | 0 | 0 | 2 | ▲33.3% |
| | 持家 | 0 | 0 | 0 | 1 | 0 | 0 | 1 | 0 | 0 | 0 | 0 | 0 | 2 | ▲33.3% |
| | 貸家 | 0 | 0 | 0 | 0 | 0 | 0 | 0 | 0 | 0 | 0 | 0 | 0 | 0 | - |
| | 給与分譲 | 0 | 0 | 0 | 0 | 0 | 0 | 0 | 0 | 0 | 0 | 0 | 0 | 0 | - |
| 川場村 | 合計 | 0 | 0 | 0 | 1 | 2 | 2 | 0 | 0 | 1 | 0 | 0 | 0 | 6 | 20.0% |
| | 持家 | 0 | 0 | 0 | 1 | 2 | 2 | 0 | 0 | 1 | 0 | 0 | 0 | 6 | 20.0% |
| | 貸家 | 0 | 0 | 0 | 0 | 0 | 0 | 0 | 0 | 0 | 0 | 0 | 0 | 0 | - |
| | 給与分譲 | 0 | 0 | 0 | 0 | 0 | 0 | 0 | 0 | 0 | 0 | 0 | 0 | 0 | - |
| 昭和村 | 合計 | 0 | 1 | 26 | 3 | 5 | 3 | 1 | 1 | 5 | 3 | 1 | 2 | 51 | 142.9% |
| | 持家 | 0 | 1 | 5 | 3 | 5 | 3 | 1 | 1 | 4 | 2 | 1 | 2 | 28 | 180.0% |
| | 貸家 | 0 | 0 | 20 | 0 | 0 | 0 | 0 | 0 | 0 | 0 | 0 | 0 | 20 | 100.0% |
| | 給与分譲 | 0 | 0 | 1 | 0 | 0 | 0 | 0 | 0 | 1 | 1 | 0 | 0 | 3 | 200.0% |
| みなかみ町 | 合計 | 0 | 1 | 5 | 2 | 9 | 6 | 2 | 4 | 3 | 7 | 4 | 1 | 44 | ▲15.4% |
| | 持家 | 0 | 1 | 5 | 2 | 9 | 6 | 2 | 4 | 3 | 7 | 4 | 1 | 44 | 18.9% |
| | 貸家 | 0 | 0 | 0 | 0 | 0 | 0 | 0 | 0 | 0 | 0 | 0 | 0 | 0 | ▲100.0% |
| | 給与分譲 | 0 | 0 | 0 | 0 | 0 | 0 | 0 | 0 | 0 | 0 | 0 | 0 | 0 | ▲100.0% |
| 佐波郡 | 合計 | 7 | 14 | 12 | 15 | 14 | 22 | 8 | 13 | 12 | 8 | 13 | 6 | 144 | 6.7% |
| | 持家 | 6 | 10 | 7 | 8 | 11 | 5 | 4 | 6 | 9 | 5 | 11 | 5 | 87 | 8.7% |
| | 貸家 | 0 | 0 | 0 | 0 | 0 | 14 | 0 | 0 | 0 | 0 | 0 | 0 | 14 | 600.0% |
| | 給与分譲 | 0 | 1 | 0 | 0 | 0 | 0 | 0 | 0 | 0 | 0 | 0 | 0 | 1 | - |
| 玉村町 | 合計 | 7 | 14 | 12 | 15 | 14 | 22 | 8 | 13 | 12 | 8 | 13 | 6 | 144 | 6.7% |
| | 持家 | 6 | 10 | 7 | 8 | 11 | 5 | 4 | 6 | 9 | 5 | 11 | 5 | 87 | 8.7% |
| | 貸家 | 0 | 0 | 0 | 0 | 0 | 14 | 0 | 0 | 0 | 0 | 0 | 0 | 14 | 600.0% |
| | 給与分譲 | 0 | 1 | 0 | 0 | 0 | 0 | 0 | 0 | 0 | 0 | 0 | 0 | 1 | - |
| 邑楽郡 | 合計 | 22 | 20 | 60 | 24 | 41 | 39 | 24 | 53 | 48 | 24 | 27 | 27 | 409 | ▲25.9% |
| | 持家 | 14 | 12 | 30 | 19 | 32 | 22 | 13 | 11 | 32 | 20 | 19 | 19 | 243 | ▲20.1% |
| | 貸家 | 0 | 8 | 20 | 3 | 0 | 12 | 0 | 3 | 0 | 0 | 0 | 8 | 54 | ▲39.3% |
| | 給与分譲 | 8 | 0 | 10 | 2 | 8 | 5 | 10 | 39 | 16 | 4 | 8 | 0 | 110 | ▲25.2% |
| 板倉町 | 合計 | 2 | 1 | 5 | 2 | 5 | 1 | 3 | 1 | 2 | 2 | 0 | 4 | 29 | ▲29.3% |
| | 持家 | 2 | 1 | 5 | 2 | 5 | 1 | 3 | 1 | 2 | 2 | 0 | 4 | 28 | ▲30.0% |
| | 貸家 | 0 | 0 | 0 | 0 | 0 | 0 | 0 | 0 | 0 | 0 | 0 | 0 | 0 | - |
| | 給与分譲 | 0 | 0 | 0 | 0 | 1 | 0 | 0 | 0 | 0 | 0 | 0 | 0 | 1 | - |
| 明和町 | 合計 | 0 | 1 | 8 | 1 | 8 | 3 | 0 | 2 | 8 | 2 | 4 | 3 | 40 | ▲21.6% |
| | 持家 | 0 | 1 | 5 | 1 | 7 | 3 | 0 | 2 | 5 | 2 | 4 | 3 | 33 | ▲17.5% |
| | 貸家 | 0 | 0 | 0 | 0 | 0 | 0 | 0 | 0 | 0 | 0 | 0 | 0 | 0 | ▲100.0% |
| | 給与分譲 | 0 | 0 | 3 | 0 | 1 | 0 | 0 | 0 | 3 | 0 | 0 | 0 | 7 | 600.0% |
| 千代田町 | 合計 | 2 | 1 | 5 | 1 | 8 | 3 | 2 | 2 | 5 | 6 | 1 | 2 | 38 | ▲11.6% |
| | 持家 | 2 | 1 | 3 | 1 | 5 | 3 | 2 | 2 | 5 | 5 | 1 | 2 | 32 | 23.1% |
| | 貸家 | 0 | 0 | 0 | 0 | 0 | 0 | 0 | 0 | 0 | 0 | 0 | 0 | 0 | ▲100.0% |
| | 給与分譲 | 0 | 0 | 2 | 0 | 3 | 0 | 0 | 0 | 0 | 1 | 0 | 0 | 6 | ▲45.5% |
| 大泉町 | 合計 | 12 | 11 | 24 | 9 | 13 | 25 | 14 | 32 | 17 | 10 | 16 | 12 | 195 | ▲16.3% |
| | 持家 | 6 | 3 | 3 | 8 | 9 | 10 | 3 | 1 | 8 | 7 | 9 | 6 | 73 | ▲2.7% |
| | 貸家 | 0 | 8 | 20 | 0 | 0 | 12 | 0 | 3 | 0 | 0 | 0 | 6 | 49 | ▲19.7% |
| | 給与分譲 | 6 | 0 | 1 | 1 | 4 | 3 | 10 | 28 | 9 | 3 | 7 | 0 | 72 | ▲15.3% |
| 邑楽町 | 合計 | 6 | 6 | 18 | 11 | 6 | 7 | 5 | 16 | 16 | 4 | 6 | 6 | 107 | ▲41.8% |
| | 持家 | 4 | 6 | 14 | 7 | 6 | 5 | 5 | 5 | 12 | 4 | 5 | 4 | 77 | ▲37.4% |
| | 貸家 | 0 | 0 | 0 | 3 | 0 | 0 | 0 | 0 | 0 | 0 | 0 | 2 | 5 | ▲58.3% |
| | 給与分譲 | 2 | 0 | 4 | 1 | 0 | 2 | 0 | 11 | 4 | 0 | 1 | 0 | 25 | ▲49.0% |

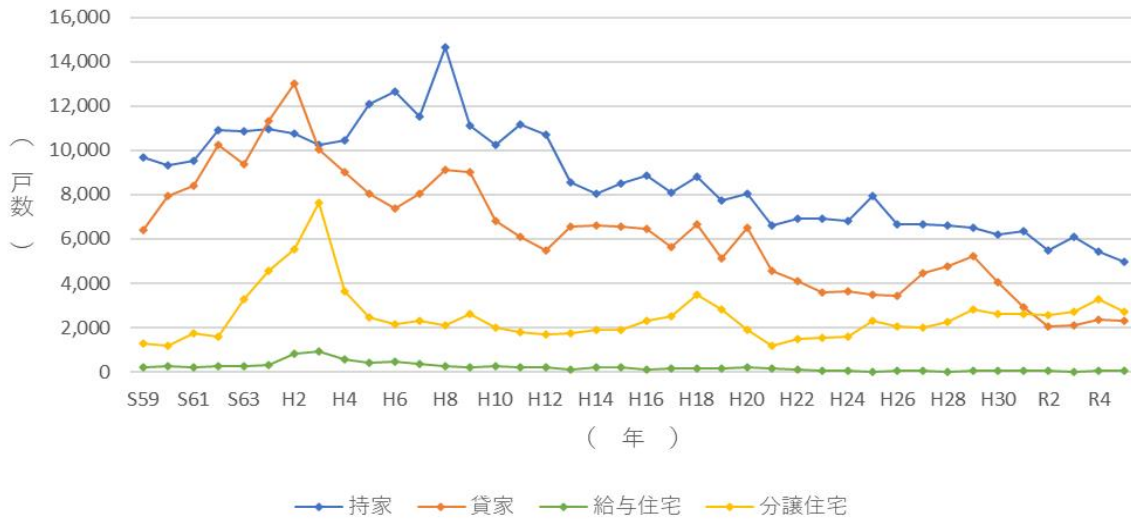
注) 市町村合併については、合併の行われた翌月から地域別の戸数に反映されていますので、前年度比については、必ずしも同条件での比にはなりません。ご注意ください。

※国土交通省が公表する数字と違うことがあります。

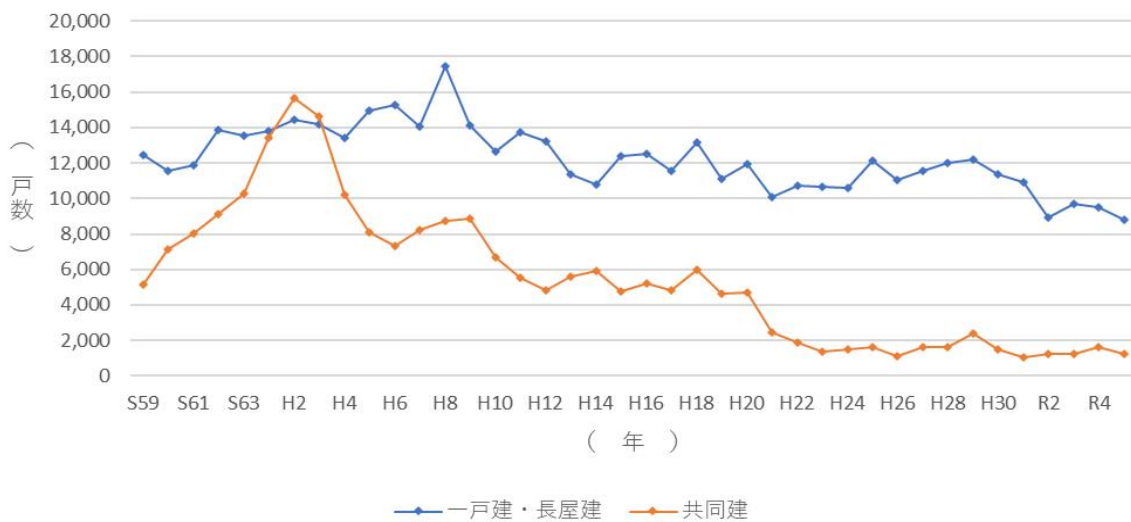
① 新設住宅着工戸数の推移（群馬県）



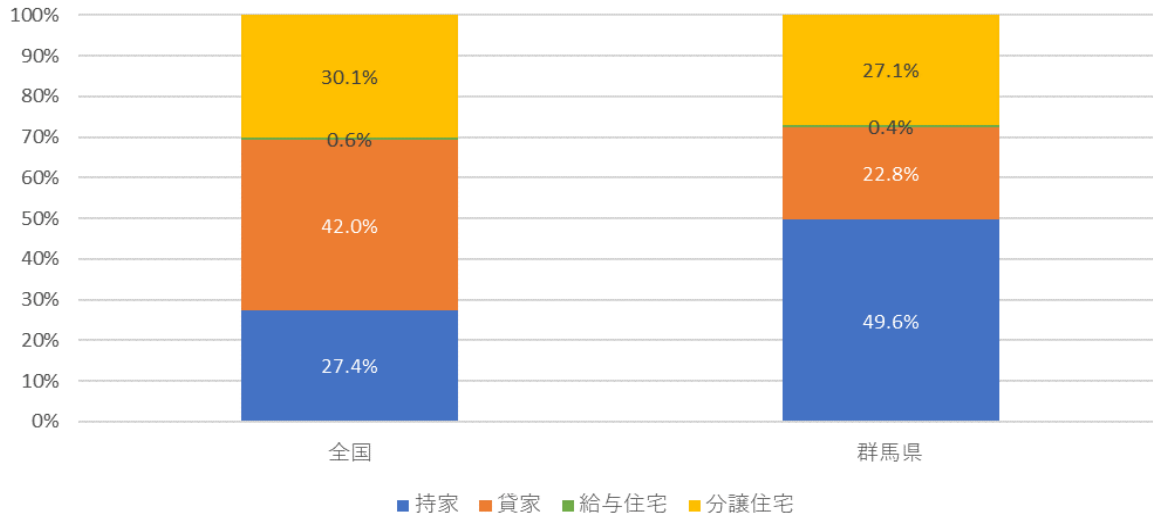
② 新設住宅着工戸数の推移（利用関係別・群馬県）



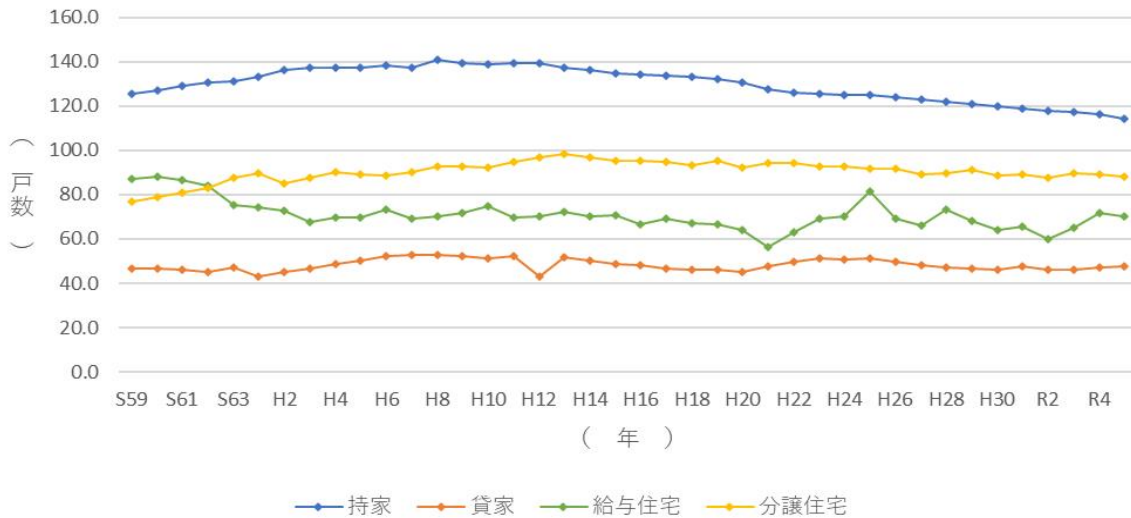
③ 新設住宅着工戸数の推移（建て方別・群馬県）



④ 令和5年 新設住宅着工戸数の割合（利用関係別）



⑤ 戸当たり床面積の推移（利用関係別・全国）



⑥ 戸当たり床面積の推移（利用関係別・群馬県）

